



Technology to go further

SILVERCAP-SC852 240

SILVERCAP-SC852 240

**PRODUCTS
CATALOGUE**

SILVERCAP.NET

Silvercap

SILVERCAP is the result of decades' experience in retread market worldwide. Products are developed following the most rigorous quality standards to offer high performance products at competitive prices.

Products are customized to achieve the transportation reality needs, reaching safety and economy. Raw materials selection criteria and technical high level processes were oriented to excellence level and to ensure customers total satisfaction.

SILVERCAP offers a precured tread complete line to radial and bias tires, rubber compounds to retread agriculture and OTR tires, cushion gum, rope rubber, anti-cracking strip rubber and multipurpose cement.

The authorized SILVERCAP dealer receives a permanent technical assistance and in Brazil must be certified by INMETRO institute to offer the best solutions in tires retread.

In Uruguay, at Libertad city, SILVERCAP had install a production plant able to produce new tires and products to use in retread tires processes. At the same structure was installed the CTAP, Development and Training Center Angela Pellegrini Paludo. In this technical center are conducted research and development for new technologies in rubber products, new tires and retread tires. At the same time, employees and customers' operators receives training and capacitation in retread activities and processes.

It should be noted that the tires retread is a safety activity, environmental correct, friendly and economical viable. Generates thousands of jobs worldwide, proportioning many benefits to society and cost competitiveness in the people and cargo transports.

SILVERCAP goal is to enable safely and economically mobility.

**Silvercap is technology to
go further.**

INDEX

PRECURED TREADS

SC 810W	5
SC 811	6
SC 811W	7
SC 812	8
SC 818W	9
SC 820	10
SC 821	11
SC 822	12
SC 823	13
SC 825	14
SC 827W	15
SC 833	16
SC 834	17
SC 840	18
SC 850	19
SC 851	21
SC 852	22
SC 860	23
SC 861	24
SC 864	25
SC 865	26
SC 870	27
SC 875	28
SC 881	29
SC 884	30
SC 885	31
SC 908	32
SC 960	33

INDEX

SUPPLIES AND ACCESSORIES

—	CUSHION GUM	34
—	EXTRUDER ROPE	35
—	ANTI-CRACKING STRIP RUBBER	36
—	MULTIPURPOSE CEMENT	37
—	SOLVENT	38
—	TIRE PAINT	39

SC 810W

Recommended Application:

Highway

Optional Application:

Regional

Trailer Axle

Medium And Long Distances

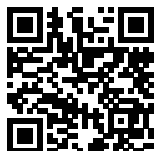


CHARACTERISTICS

Light tread with side wings and rounded shoulders to minimize the effect of side drag in maneuvering.

TECHNICAL DATA

N#	Width		Tread Depth		Weight/m/Lbs./Foot			Weight/unit/Lbs.		Recommended Tire	Size	Length	
	mm	In	mm	In	kg/m	Lbs/m	Lbs/ft	kg	Lbs			mm	ft
8.5	220	8 5/8	9	11/32	2,47	5,45	1,66	7,69	16,95	275/80R22.5	P	3,120	10,236
8.5	220	8 5/8	9	11/32	2,47	5,45	1,66	7,90	17,42	295/80R22.5 11R22.5	M	3,200	10,499
9	230	9	9	11/32	2,57	5,67	1,72	7,93	17,48	275/80R22.5	P	3,090	10,138
9	230	9	9	11/32	2,56	5,64	1,72	8,15	17,97	295/80R22.5 11R22.5	M	3,180	10,433
9.5	240	9 4/8	9	11/32	2,67	5,89	1,79	8,30	18,30	275/80R22.5	P	3,110	10,203
9.5	240	9 4/8	9	11/32	2,67	5,89	1,79	8,53	18,81	295/80R22.5	M	3,200	10,499
10	250	9 7/8	9	11/32	2,74	6,04	1,84	8,77	19,33	295/80R22.5	M	3,200	10,499



SC 811

Recommended Application:

Highway

Optional Application:

Regional

Trailer Axle

Medium and Long Distances



CHARACTERISTICS

Tread with rounded shoulders to minimize the effect of lateral drag in maneuvers.

TECHNICAL DATA

N#	Width		Tread Depth		Weight/m/Lbs./Foot			Weight/unit/Lbs.		Recommended Tire	Size	Length	
	mm	In	mm	In	kg/m	Lbs/m	Lbs/ft	kg	Lbs			mm	ft
8.5	220	8 5/8	12	15/32	2,94	6,48	1,97	9,22	20,33	275/80R22.5	P	3,140	10,301
8.5	220	8 5/8	12	15/32	2,94	6,48	1,98	9,50	20,94	295/80R22.5 11R22.5	M	3,230	10,596
8.5	220	8 5/8	12	15/32	2,94	6,48	1,97	9,68	21,34	11.00R20	E	3,300	10,826
9	230	9	12	15/32	3,07	6,77	2,06	9,63	21,23	275/80R22.5	P	3,140	10,301
9	230	9	12	15/32	3,07	6,77	2,07	9,93	21,89	295/80R22.5 11R22.5	M	3,230	10,596
9	230	9	12	15/32	3,07	6,77	2,06	10,12	22,31	12R22.5	E	3,300	10,826
9.5	240	9 4/8	12	15/32	3,21	7,08	2,29	10,70	23,59	275/80R22.5	P	3,140	10,301
9.5	240	9 4/8	12	15/32	3,21	7,08	2,16	10,38	22,88	295/80R22.5	M	3,230	10,596
9.5	240	9 4/8	12	15/32	3,21	7,08	2,15	10,58	23,32	12R22.5 315/80R22.5	E	3,300	10,826
10	250	9 7/8	12	15/32	3,34	7,36	2,25	10,80	23,81	295/80R22.5	M	3,230	10,596
10	250	9 7/8	12	15/32	3,34	7,36	2,24	11,01	24,27	315/80R22.5	E	3,300	10,826
10.5	260	10 2/8	12	15/32	3,47	7,65	2,33	11,22	24,74	295/80R22.5	M	3,230	10,596



SC 811W

Recommended Application:

Highway

Optional Application:

Regional

Trailer Axle

Medium and Long Distances



CHARACTERISTICS

Tread with side wings and rounded shoulders to minimize the effect of side drag in maneuvering.

TECHNICAL DATA

N#	Width		Tread Depth		Weight/m/Lbs./Foot			Weight/unit/Lbs.		Recommended Tire	Size	Length	
	mm	In	mm	In	kg/m	Lbs/m	Lbs/ft	kg	Lbs			mm	ft
7	200	7 7/8	12	15/32	2,90	6,39	1,94	9,02	19,89	9.00R20	P	3,120	10,236
7	200	7 7/8	12	15/32	2,90	6,39	1,94	9,26	20,41	10.00R20	M	3,200	10,498
8.5	220	8 5/8	12	15/32	3,11	6,86	2,09	9,70	21,38	275/80R22.5	P	3,120	10,236
8.5	220	8 5/8	12	15/32	3,11	6,86	2,09	9,96	21,96	295/80R22.5 11R22.5	M	3,200	10,498
8.5	220	8 5/8	12	15/32	3,11	6,86	2,09	10,22	22,53	11.00R20	E	3,290	10,793
9	230	9	12	15/32	3,30	7,28	2,22	10,29	22,69	275/80R22.5	P	3,120	10,236
9	230	9	12	15/32	3,30	7,28	2,22	10,57	23,30	295/80R22.5 11R22.5	M	3,200	10,498
9	230	9	12	15/32	3,30	7,28	2,22	10,86	23,94	12R22.5	E	3,290	10,793
9.5	240	9 4/8	12	15/32	3,44	7,58	2,31	11,00	24,25	295/80R22.5	M	3,200	10,498
9.5	240	9 4/8	12	15/32	3,44	7,58	2,31	11,32	24,96	12R22.5 315/80R22.5	E	3,290	10,793
10	250	9 7/8	12	15/32	3,62	7,98	2,43	11,59	25,55	295/80R22.5	M	3,200	10,498
10	250	9 7/8	12	15/32	3,62	7,98	2,43	11,94	26,32	315/80R22.5	E	3,300	10,826
10.5	260	10 2/8	12	15/32	3,77	8,31	2,53	12,05	26,57	295/80R22.5	M	3,200	10,498



SC 812

Recommended Application:

Highway

Optional Application:

Regional

Trailer Axle

Medium and Long Distances



CHARACTERISTICS

High performance tread with rounded shoulders to minimize the effect of lateral drag in maneuvering.

TECHNICAL DATA

N#	Width		Tread Depth		Weight/Meter/Lbs./Foot			Weight/unit/Lbs.		Recommended Tire	Size	Length	
	mm	In	mm	In	kg/m	Lbs/m	Lbs/ft	kg	Lbs			mm	ft
7.5	210	8 2/8	15	19/32	3,35	7,39	2,25	10,51	23,17	9.00R20	P	3.140	10,301
8.5	220	8 5/8	15	19/32	3,51	7,74	2,36	11,01	24,27	275/80R22.5	P	3.140	10,301
8.5	220	8 5/8	15	19/32	3,51	7,74	2,36	11,34	25,00	295/80R22.5 11R22.5	M	3.230	10,596
8.5	220	8 5/8	15	19/32	3,51	7,74	2,36	11,56	25,49	11.00R20	E	3.290	10,793
9	230	9	15	19/32	3,67	8,09	2,46	11,51	25,38	275/80R22.5	P	3.140	10,301
9	230	9	15	19/32	3,67	8,09	2,47	11,86	26,15	295/80R22.5 11R22.5	M	3.230	10,596
9	230	9	15	19/32	3,67	8,09	2,47	12,09	26,65	12R22.5	E	3.290	10,793
9.5	240	9 4/8	15	19/32	3,83	8,44	2,57	12,01	26,48	275/80R22.5	P	3.140	10,301
9.5	240	9 4/8	15	19/32	3,83	8,44	2,58	12,38	27,29	295/80R22.5	M	3.230	10,596
9.5	240	9 4/8	15	19/32	3,83	8,44	2,58	12,62	27,82	12R22.5 315/80R22.5	E	3.290	10,793
10	250	9 7/8	15	19/32	3,99	8,80	2,68	12,90	28,44	295/80R22.5	M	3.230	10,596
10	250	9 7/8	15	19/32	3,99	8,80	2,68	13,14	28,97	315/80R22.5	E	3.290	10,793
10.5	260	10 2/8	15	19/32	4,15	9,15	2,79	13,41	29,56	295/80R22.5	M	3.230	10,596
10.5	260	10 2/8	15	19/32	4,15	9,15	2,79	13,67	30,14	315/80R22.5	E	3.290	10,793



SC 818W

Recommended Application:

Highway

Optional Application:

Regional

Trailer Axle

Medium and Long Distances



CHARACTERISTICS

Tread with side wings and rounded shoulders indicated for “Super Single” tires.

TECHNICAL DATA

N#	Width		Tread Depth		Weight/m/Lbs./Foot			Weight/unit/Lbs.		Recommended Tire	Size	Length	
	mm	In	mm	In	kg/m	Lbs/m	Lbs/ft	kg	Lbs			mm	ft
12	300	11 6/8	12	15/32	4,04	8,91	2,71	13,20	29,10	385/65R22.5	S	3.270	10,728



SC 820

Recommended Application:

Highway

Optional Application:

Regional

Drive and Trailer Axles
Short and Medium Distances

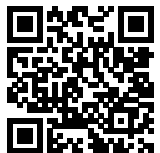


CHARACTERISTICS

Traditional tread, high mileage, designed to provide excellent driving performance in regional use.

TECHNICAL DATA

N#	Width		Tread Depth		Weight/m/Lbs/Ft			Weight/unit/Lbs		Recommended Tire	Size	Length	
	mm	In	mm	In	kg/m	Lbs/m	Lbs/ft	kg	Lbs			mm	ft
7.5	210	8 2/8	14	18/32	3,18	7,01	2,14	9,93	21,89	9.00R20	P	3,120	10,236
7.5	210	8 2/8	14	18/32	3,18	7,01	2,14	10,14	22,35	10.00R20 11R22.5	M	3,190	10,465
8.5	220	8 5/8	14	18/32	3,25	7,17	2,19	10,18	22,44	275/80R22.5	P	3,130	10,268
8.5	220	8 5/8	14	18/32	3,25	7,17	2,18	10,42	22,97	295/80R22.5 11R22.5	M	3,210	10,531
9	230	9	14	18/32	3,42	7,54	2,30	10,64	23,46	275/80R22.5	P	3,110	10,203
9	230	9	14	18/32	3,41	7,52	2,29	10,90	24,03	295/80R22.5 11R22.5	M	3,200	10,498
9	230	9	14	18/32	3,38	7,45	2,27	11,22	24,74	12R22.5	E	3,320	10,892
9.5	240	9 4/8	14	18/32	3,54	7,80	2,38	11,04	24,34	275/80R22.5	P	3,120	10,236
9.5	240	9 4/8	14	18/32	3,54	7,80	2,38	11,32	24,96	295/80R22.5	M	3,200	10,498
9.5	240	9 4/8	14	18/32	3,52	7,76	2,36	11,67	25,73	12R22.5 315/80R22.5	E	3,320	10,892
10	250	9 7/8	14	18/32	3,69	8,14	2,48	11,92	26,28	295/80R22.5	M	3,230	10,596
10	250	9 7/8	14	18/32	3,67	8,09	2,47	12,16	26,81	315/80R22.5	E	3,310	10,859
10.5	260	10 2/8	14	18/32	3,84	8,47	2,58	12,30	27,12	295/80R22.5	M	3,200	10,498
10.5	260	10 2/8	14	18/32	3,82	8,42	2,57	12,64	27,87	315/80R22.5	E	3,310	10,859



SC 821

Recommended Application:

Highway

Optional Application:

Regional

Drive Axle

Short and Medium Distances



CHARACTERISTICS

Light tread that provides road comfort and excellent driving in light commercial vehicles.

TECHNICAL DATA

N#	Width		Tread Depth		Weight/m/Lbs./Foot			Weight/unit/Lbs.		Recommended Tire	Size	Length	
	mm	In	mm	In	kg/m	Lbs/m	Lbs/ft	kg	Lbs			mm	ft
5.5	180	7 1/8	10	13/32	2,14	4,72	1,44	5,09	11,22	215/75R17.5	MICRO	2,380	7,808
6.5	190	7 4/8	10	13/32	2,26	4,98	1,53	5,39	11,88	215/75R17.5	MICRO	2,360	7,742



SC 822

Recommended Application:

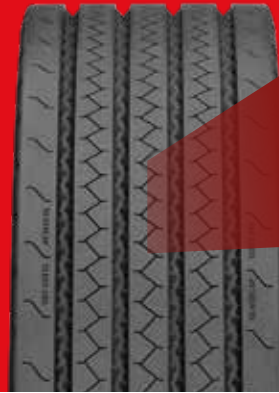
Highway

Optional Application:

Regional

Trailer Axle

Medium and Long Distances



CHARACTERISTICS

Tread with strength rib of shoulder-improve shoulders and “V” grooves designed to maximize performance.

TECHNICAL DATA

N#	Width		Tread Depth		Weight/m/Lbs./Foot			Weight/unit/Lbs.		Recommended Tire	Size	Length	
	mm	In	mm	In	kg/m	Lbs/m	Lbs/ft	kg	Lbs			mm	ft
8.5	220	8 5/8	13	16/32	3,23	7,12	2,17	9,97	21,98	275/80R22.5	P	3,090	10,137
8.5	220	8 5/8	13	16/32	3,22	7,10	2,16	10,30	22,71	295/80R22.5 11R22.5	M	3,200	10,498
8.5	220	8 5/8	13	16/32	3,22	7,10	2,16	10,65	23,48	11.00R20	E	3,310	10,859
9	230	9	13	16/32	3,26	7,19	2,19	10,07	22,20	275/80R22.5	P	3,090	10,137
9	230	9	13	16/32	3,26	7,19	2,19	10,43	22,99	295/80R22.5 11R22.5	M	3,200	10,498
9	230	9	13	16/32	3,26	7,19	2,19	10,82	23,85	12R22.5	E	3,320	10,892
9.5	240	9 4/8	13	16/32	3,40	7,50	2,29	10,89	24,01	295/80R22.5	M	3,200	10,498
9.5	240	9 4/8	13	16/32	3,40	7,50	2,28	11,28	24,87	12R22.5 315/80R22.5	E	3,320	10,892
10	250	9 7/8	13	16/32	3,54	7,80	2,38	11,27	24,85	295/80R22.5	M	3,180	10,432
10	250	9 7/8	13	16/32	3,54	7,80	2,38	11,76	25,93	315/80R22.5	E	3,320	10,892
10.5	260	10 2/8	13	16/32	3,92	8,64	2,64	12,95	28,55	315/80R22.5	E	3,300	10,826
11	270	9 7/8	13	16/32	4,05	8,93	2,71	13,37	29,48	315/80R22.5	E	3,310	10,859



SC 823

Recommended Application:

Highway

Optional Application:

Regional

Drive Axle

Short and Medium Distances



CHARACTERISTICS

Tread with strength rib of shoulder-improve robust blocks that guarantee the best tractive response in light commercial vehicles.

TECHNICAL DATA

N#	Width		Tread Depth		Weight/m/Lbs./Foot			Weight/unit/Lbs.		Recommended Tire	Size	Lenght	
	mm	In	mm	In	kg/m	Lbs/m	Lbs/ft	kg	Lbs			mm	ft
5.5	180	7 1/8	12	15/32	2,48	5,47	1,66	5,82	12,83	215/75R17.5	MICRO	2.350	7,709
6.5	190	7 4/8	12	15/32	2,62	5,78	1,76	6,15	13,56	215/75R17.5	MICRO	2.350	7,709
7	200	7 7/8	12	15/32	2,75	6,06	1,85	6,72	14,82	235/75R17.5	MICRO	2.440	8,005
7.5	210	8 2/8	12	15/32	2,89	6,37	1,94	7,08	15,61	235/75R17.5	MICRO	2.450	8,037



SC 825

Recommended Application:

Highway

Optional Application:

Regional

Drive Axle

Short and Medium Distances



CHARACTERISTICS

Tread with strong shoulders indicated for urban cargo vehicles.

TECHNICAL DATA

N#	Width		Tread Depth		Weight/m/Lbs./Foot			Weight/unit/Lbs.		Recommended Tire	Size	Lenght	
	mm	In	mm	In	kg/m	Lbs/m	Lbs/ft	kg	Lbs			mm	ft
5	175	6 7/8	8	10/32	1,62	3,57	1,09	3,83	8,44	185R14 195R14 195/70R15	VUC	2.370	7,775
6	185	7 2/8	8	10/32	1,71	3,77	1,15	3,98	8,77	195/70R15 195/75R16 205/75R14	VUC	2.330	7,644
6.7	195	7 5/8	8	10/32	1,80	3,97	1,21	4,20	9,26	205/75R14 215/70R15 215/75R16	VUC	2.330	7,644
7.2	205	8 1/8	8	10/32	1,90	4,19	1,28	4,50	9,92	215/65R16 225/65R16 225/75R16	VUC	2.370	7,775



SC 827W

Recommended Application:

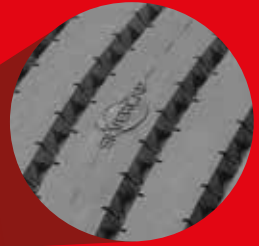
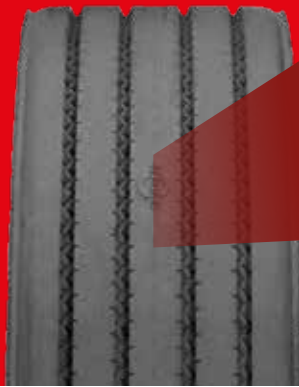
Highway

Optional Application:

Regional

Trailer Axle

Medium and Long Distances



CHARACTERISTICS

High performance band with “wing” grooves, side frame and rounded shoulders.

TECHNICAL DATA

N#	Width		Tread Depth		Weight/m/Lbs./Foot			Weight/unit/Lbs.		Recommended Tire	Size	Lenght	
	mm	In	mm	In	kg/m	Lbs/m	Lbs/ft	kg	Lbs			mm	ft
9	230	9	13	16/32	3,34	7,36	2,24	10,37	22,86	275/80R22.5	P	3,110	10,203
9	230	9	13	16/32	3,34	7,36	2,24	10,69	23,57	295/80R22.5	M	3,200	10,499
9	230	9	13	16/32	3,34	7,36	2,24	10,69	23,57	315/80R22.5	E	3,290	10,794
9.5	240	9 4/8	13	16/32	3,63	8,00	2,44	11,36	25,04	275/80R22.5	P	3,130	10,269
9.5	240	9 4/8	13	16/32	3,63	8,00	2,44	11,61	25,60	295/80R22.5	M	3,200	10,499
10	250	9 7/8	13	16/32	3,79	8,36	2,55	11,82	26,06	275/80R22.5	P	3,120	10,236
10	250	9 7/8	13	16/32	3,78	8,33	2,54	12,11	26,70	295/80R22.5	M	3,200	10,499
10.5	260	10 2/8	13	16/32	3,98	8,77	2,68	12,75	28,11	295/80R22.5	M	3,200	10,499



SC 833

Recommended Application:

Highway

Optional Application:

Regional

Drive Axle

Short and Medium Distances



CHARACTERISTICS

High performance tread that provides excellent driving and comfort.

TECHNICAL DATA

N#	Width		Tread Depth		Weight/m/Lbs./Foot			Weight/unit/Lbs.		Recommended Tire	Size	Lenght	
	mm	In	mm	In	kg/m	Lbs/m	Lbs/ft	kg	Lbs			mm	ft
9	230	9	16	20/32	4,10	9,04	2,75	12,86	28,35	275/80R22.5	P	3,140	10,301
9	230	9	16	20/32	4,15	9,15	2,79	13,74	30,29	12R22.5	E	3,310	10,859
9.5	240	9 4/8	16	20/32	4,27	9,41	2,87	13,45	29,65	275/80R22.5	P	3,150	10,334
9.5	240	9 4/8	16	20/32	4,34	9,57	2,91	14,40	31,75	12R22.5 315/80R22.5	E	3,320	10,892
10	250	9 7/8	16	20/32	4,57	10,08	3,07	14,55	32,08	295/80R22.5	M	3,190	10,465
10.5	260	10 2/8	16	20/32	4,75	10,47	2,99	14,22	31,35	295/80R22.5	M	3,200	10,498
9	230	9	18	23/32	4,56	10,05	3,07	14,05	30,97	275/80R22.5	P	3,080	10,104
9.5	240	9 4/8	18	23/32	4,76	10,49	3,20	14,66	32,32	275/80R22.5	P	3,080	10,104
9.5	240	9 4/8	18	23/32	4,76	10,49	3,20	15,20	33,51	295/80R22.5	M	3,190	10,465
10	250	9 7/8	18	23/32	4,95	10,91	3,33	15,24	33,60	275/80R22.5	P	3,080	10,104
10	250	9 7/8	18	23/32	5,95	13,12	3,33	15,84	34,92	295/80R22.5	M	3,200	10,498



SC 834

Recommended Application:

Highway

Optional Application:

Regional

Drive Axle

Short and Medium Distances



CHARACTERISTICS

High performance tread with robust blocks and great weight/meter ratio.

TECHNICAL DATA

N#	Width		Tread Depth		Weight/m/Lbs./Foot			Weight/unit/Lbs.		Recommended Tire	Size	Length	
	mm	In	mm	In	kg/m	Lbs/m	Lbs/ft	kg	Lbs			mm	ft
9	230	9	15	19/32	4,07	8,97	2,74	12,63	27,84	275/80R22.5	P	3.100	10,171
9	230	9	15	19/32	4,07	8,97	2,74	13,20	29,10	295/80R22.5 11R22.5	M	3.240	10,630
9	230	9	15	19/32	4,13	9,11	2,77	13,71	30,23	315/80R22.5	E	3.320	10,892
9.5	240	9 4/8	15	19/32	4,38	9,66	2,94	13,62	30,03	275/80R22.5	P	3.110	10,203
9.5	240	9 4/8	15	19/32	4,34	9,57	2,91	14,05	30,97	295/80R22.5	M	3.240	10,630
9.5	240	9 4/8	15	19/32	4,41	9,72	2,96	14,63	32,25	315/80R22.5	E	3.320	10,892
10	250	9 7/8	15	19/32	4,52	9,96	3,04	14,57	32,12	295/80R22.5	M	3.220	10,564
10	250	9 7/8	15	19/32	4,59	10,12	3,08	15,14	33,38	315/80R22.5	E	3.300	10,827
10.5	260	10 2/8	15	19/32	4,76	10,49	3,19	15,34	33,82	295/80R22.5	M	3.230	10,597
10.5	260	10 2/8	15	19/32	4,84	10,67	3,25	15,98	35,23	315/80R22.5	E	3.300	10,827
9.5	240	9 4/8	18	23/32	5,09	11,22	3,42	15,82	34,88	275/80R22.5	P	3.110	10,203
9.5	240	9 4/8	18	23/32	5,09	11,22	3,42	16,47	36,31	295/80R22.5	M	3.240	10,630
9.5	240	9 4/8	18	23/32	5,17	11,40	3,47	17,16	37,83	315/80R22.5	E	3.320	10,892
10	250	9 7/8	18	23/32	5,30	11,68	3,56	17,17	37,85	295/80R22.5	M	3.240	10,630
10	250	9 7/8	18	23/32	5,39	11,88	3,62	17,88	39,42	315/80R22.5	E	3.320	10,892
10.5	260	10 2/8	18	23/32	5,58	12,30	3,74	18,04	39,77	295/80R22.5	M	3.240	10,630
10.5	260	10 2/8	18	23/23	5,67	12,50	3,81	18,84	41,54	315/80R22.5	E	3.320	10,892

PRECURED TREADS - SILVERCAP



SC 840

Recommended Application:

Highway

Optional Application:

Regional

Drive Axle

Short and Medium Distances



CHARACTERISTICS

Tread for car tires with side flaps, symmetrical and latest generation design.

TECHNICAL DATA

N#	Width		Tread Depth		Weight/m/Lbs./Foot			Weight/unit/Lbs.		Recommended Tire	Size	Length	
	mm	In	mm	In	kg/m	Lbs/m	Lbs/ft	kg	Lbs			mm	ft
4.5	165	6 4/8	7.5	9/32	1,31	2,89	0,88	4,52	9,96	155 165	G	3.460	11,351
5	175	6 7/8	7.5	9/32	1,39	3,06	0,93	4,80	10,58	165 175	G	3.460	11,351
6	185	7 2/8	7.5	9/32	1,47	3,24	0,99	5,08	11,20	175 185	G	3.460	11,351
6.7	195	7 5/8	7.5	9/32	1,55	3,42	1,04	5,36	11,82	185 195	G	3.460	11,351
7.2	205	8 1/8	7.5	9/32	1,63	3,59	1,09	5,62	12,39	195	G	3.460	11,351



SC 850

Recommended Application:
Mixed / Regional

Optional Application:
Off the Road

Drive and Trailer Axles
Short and Medium Distances

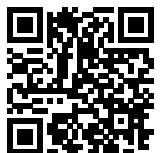


CHARACTERISTICS

Traditional tread for on/off the road use. "V" grooves avoid stone retention.

TECHNICAL DATA

N#	Width		Tread Depth		Weight/m/Lbs./Foot			Weight/unit/Lbs.		Recommended Tire	Size	Lenght	
	mm	In	mm	In	kg/m	Lbs/m	Lbs/ft	kg	Lbs			mm	ft
5.5	180	7 1/8	14	18/32	2,82	6,22	1,89	6,58	14,51	215/75R17.5	MICRO	2,340	7,677
5.5	180	7 1/8	14	18/32	2,82	6,22	1,90	8,89	19,60	9.00R20	P	3,150	10,334
6.5	190	7 4/8	14	18/32	2,96	6,53	2,60	9,24	20,37	215/75R17.5	MICRO	2,390	7,841
6.5	190	7 4/8	14	18/32	2,96	6,53	1,52	7,07	15,59	9.00R20	P	3,120	10,236



SC 850

Recommended Application:
Mix Application

Optional Application:
Off the Road

Drive and Trailer Axles
Short and Medium Distances



CHARACTERISTICS

Traditional tread for on/off the road use. "V" grooves avoid stone retention.

TECHNICAL DATA

N#	Width		Tread Depth		Weight/m/Lbs./Foot			Weight/unit/Lbs.		Recommended Tire	Size	Length	
	mm	In	mm	In	kg/m	Lbs/m	Lbs/ft	kg	Lbs			mm	ft
7	200	7 7/8	15	19/32	3,40	7,50	2,28	10,86	23,94	10.00R20	M	3.200	10,498
7.5	210	8 2/8	15	19/32	3,52	7,76	2,37	10,88	23,99	9.00R20	P	3.090	10,137
7.5	210	8 2/8	15	19/32	3,53	7,78	2,37	11,36	25,04	10.00R20	M	3.220	10,564
8.5	220	8 5/8	15	19/32	3,63	8,00	2,44	11,36	25,04	275/80R22.5	P	3.130	10,268
8.5	220	8 5/8	15	19/32	3,63	8,00	2,44	11,72	25,84	295/80R22.5 11R22.5	M	3.230	10,596
9	230	9	15	19/32	3,73	8,22	2,51	11,67	25,73	275/80R22.5	P	3.130	10,268
9	230	9	15	19/32	3,73	8,22	2,51	12,06	26,59	295/80R22.5 11R22.5	M	3.230	10,596
9	230	9	15	19/32	3,73	8,22	2,51	12,35	27,23	315/80R22.5	E	3.310	10,859
9.5	240	9 4/8	15	19/32	3,98	8,77	2,67	12,45	27,45	275/80R22.5	P	3.130	10,268
9.5	240	9 4/8	15	19/32	3,98	8,77	2,67	12,77	28,15	295/80R22.5	M	3.210	10,531
9.5	240	9 4/8	15	19/32	3,97	8,75	2,67	13,07	28,81	315/80R22.5	E	3.290	10,793
10	250	9 7/8	15	19/32	4,07	8,97	2,74	12,71	28,02	295/80R22.5	P	3.120	10,236
10	250	9 7/8	15	19/32	4,08	8,99	2,74	13,04	28,75	295/80R22.5	M	3.200	10,498
10	250	9 7/8	15	19/32	4,07	8,97	2,73	13,38	29,50	315/80R22.5	E	3.290	10,793
10.5	260	10 2/8	15	19/32	4,23	9,33	2,84	13,57	29,92	295/80R22.5	M	3.210	10,531
10.5	260	10 2/8	15	19/32	4,23	9,33	2,84	13,92	30,69	315/80R22.5	E	3.290	10,793



SC 851

Recommended Application:
 Mix Application
 Optional Application:
 Off the Road

Drive and Trailer Axles
 Short and Medium Distances



CHARACTERISTICS

Traditional tread with less weight for on/off the road use. "V" grooves avoid stone retention.

TECHNICAL DATA

N#	Width		Tread Depth		Weight/m/Lbs./Foot			Weight/unit/Lbs.		Recommended Tire	Size	Lenght	
	mm	In	mm	In	kg/m	Lbs/m	Lbs/ft	kg	Lbs			mm	ft
7.5	210	8 2/8	13.5	17/32	3,20	7,05	2,12	9,88	21,78	9,00R20	P	3,130	10,269
7.5	210	8 2/8	13.5	17/32	3,20	7,05	2,08	9,88	21,78	10,00R20	M	3,190	10,466
8.5	220	8 5/8	13.5	17/32	3,33	7,35	2,22	10,43	22,99	275/80R22.5	P	3,150	10,335
8.5	220	8 5/8	13.5	17/32	3,29	7,26	2,22	10,64	23,46	295/80R22.5 11R22.5	M	3,220	10,564
9	230	9	13.5	17/32	3,46	7,62	2,32	10,82	23,85	275/80R22.5	P	3,130	10,268
9	230	9	13.5	17/32	3,43	7,56	2,30	11,07	24,41	295/80R22.5 11R22.5	M	3,200	10,499
9.5	240	9 4/8	13.5	17/32	3,58	7,90	2,41	11,22	24,74	275/80R22.5	P	3,100	10,171
9.5	240	9 4/8	13.5	17/32	3,65	8,05	2,45	11,72	25,84	295/80R22.5	M	3,240	10,631
10	250	9 7/8	13.5	17/32	3,77	8,32	2,53	12,07	26,61	295/80R22.5	M	3,210	10,531



SC 852

Recommended Application:
Mix Application

Optional Application:
Off the Road

Drive and Trailer Axles
Short and Medium Distances



CHARACTERISTICS

High performance tread, with strenght blocks and grooves with stone expellers to protect the carcass.

TECHNICAL DATA

N#	Width		Tread Depth		Weight/m/Lbs./Foot			Weight/unit/Lbs.		Recommended Tire	Size	Lenght	
	mm	In	mm	In	kg/m	Lbs/m	Lbs/ft	kg	Lbs			mm	ft
7.5	210	8 2/8	18	23/32	4,04	8,91	2,71	12,72	28,04	9.00R20	P	3.150	10,335
7.5	210	8 2/8	18	23/32	4,04	8,91	2,71	12,96	28,57	10.00R20	M	3.210	10,531
8.5	220	8 5/8	18	23/32	4,23	9,33	2,84	13,24	29,19	275/80R22.5	P	3.130	10,269
8.5	220	8 5/8	18	23/32	4,23	9,33	2,84	13,52	29,81	295/80R22.5 11R22.5	M	3.200	10,499
9	230	9	18	23/32	4,43	9,77	2,97	13,94	30,73	275/80R22.5	P	3.150	10,335
9	230	9	18	23/32	4,43	9,77	2,97	14,25	31,42	295/80R22.5 11R22.5	M	3.220	10,564
9	230	9	18	23/32	4,43	9,77	2,97	14,55	32,08	315/80R22.5	E	3.290	10,794
9.5	240	9 4/8	18	23/32	4,62	10,19	3,10	14,50	31,97	275/80R22.5	P	3.140	10,302
9.5	240	9 4/8	18	23/32	4,62	10,19	3,11	14,80	32,63	295/80R22.5	M	3.200	10,499
9.5	240	9 4/8	18	23/32	4,62	10,19	3,11	15,12	33,33	315/80R22.5	E	3.270	10,728
10	250	9 7/8	18	23/32	4,81	10,60	3,23	15,15	33,40	295/80R22.5	P	3.150	10,335
10	250	9 7/8	18	23/32	4,81	10,60	3,24	15,52	34,22	295/80R22.5	M	3.220	10,564
10	250	9 7/8	18	23/32	4,81	10,60	3,23	15,88	35,01	315/80R22.5	E	3.300	10,827
10.5	260	10 2/8	18	23/32	4,81	10,60	3,37	16,13	35,56	295/80R22.5	M	3.220	10,564



SC 860

Recommended Application:

Highway

Optional Application:

Regional

Drive Axle

Medium and Long Distances



CHARACTERISTICS

Tread with excellent traction power, open shoulders for better water drainage.

TECHNICAL DATA

N#	Width		Tread Depth		Weight/m/Lbs./Foot			Weight/unit/Lbs.		Recommended Tire	Size	Length	
	mm	In	mm	In	kg/m	Lbs/m	Lbs/ft	kg	Lbs			mm	ft
8.5	220	8 5/8	20	25/32	4,15	9,15	2,79	12,81	28,24	275/80R22.5	P	3,090	10,137
8.5	220	8 5/8	20	25/32	4,15	9,15	2,79	13,23	29,17	295/80R22.5 11R22.5	M	3,190	10,465
9	230	9	20	25/32	4,59	10,12	3,07	14,60	32,19	295/80R22.5 11R22.5	M	3,180	10,492
9	230	9	20	25/32	4,59	10,12	3,08	15,09	33,27	315/80R22.5	E	3,290	10,793
9.5	240	9 4/8	20	25/32	4,79	10,56	3,24	15,34	33,82	295/80R22.5	M	3,180	10,432
9.5	240	9 4/8	20	25/32	4,79	10,56	3,22	15,78	34,79	315/80R22.5	E	3,290	10,793
10	250	9 7/8	20	25/32	4,99	11,00	3,35	15,85	34,94	295/80R22.5	M	3,180	10,432
10	250	9 7/8	20	25/32	4,99	11,00	3,36	16,43	36,22	315/80R22.5	E	3,290	10,793
10.5	260	10 2/8	20	25/32	5,19	11,44	3,48	16,49	36,35	295/80R22.5	M	3,180	10,432
10.5	260	10 2/8	20	25/32	5,19	11,44	3,49	17,12	37,74	315/80R22.5	E	3,300	10,826
11	270	10 5/8	20	25/32	5,39	11,88	3,62	17,15	37,81	295/80R22.5	M	3,180	10,432
11	270	10 5/8	20	25/32	5,39	11,88	3,62	17,82	39,29	315/80R22.5	E	3,310	10,859



SC 861

Recommended Application:

Highway

Optional Application:

Regional

Drive Axle

Medium and Long Distances



CHARACTERISTICS

High performance tread, blocks that provide great cooling during operation.

TECHNICAL DATA

N#	Width		Tread Depth		Weight/m/Lbs./Foot			Weight/unit/Lbs.		Recommended Tire	Size	Length	
	mm	In	mm	In	kg/m	Lbs/m	Lbs/ft	kg	Lbs			mm	ft
9	230	9	17	22/32	3,88	8,55	2,61	12,02	26,50	275/80R22.5	P	3,100	10,17
9.5	240	9 4/8	17	22/32	4,03	8,88	2,71	12,49	27,54	275/80R22.5	P	3,100	10,17
9.5	240	9 4/8	17	22/32	4,03	8,88	2,71	12,86	28,35	295/80R22.5	M	3,190	10,465
10	250	9 7/8	17	22/32	4,20	9,26	2,82	13,39	29,52	295/80R22.5	M	3,190	10,465
10.5	260	10 2/8	17	22/32	4,38	9,66	2,94	13,95	30,75	295/80R22.5	M	3,190	10,465



SC 864

Recommended Application:

Highway

Optional Application:

Regional

Drive Axle

Medium and Long Distances



CHARACTERISTICS

Traditional tread with strenght blocks, excellent tractive response and great water drainage.

TECHNICAL DATA

N#	Width		Tread Depth		Weight/m/Lbs./Foot			Weight/unit/Lbs.		Recommended Tire	Size	Lenght	
	mm	In	mm	In	kg/m	Lbs/m	Lbs/ft	kg	Lbs			mm	ft
7.2	205	8 1/8	17	22/32	3,53	7,78	2,37	11,06	24,38	9.00R20	P	3.140	10,302
7.2	205	8 1/8	17	22/32	3,53	7,78	2,37	11,34	25,00	10.00R20	M	3.220	10,564
7.5	210	8 2/8	17	22/32	3,62	7,98	2,43	11,34	25,00	9.00R20	P	3.140	10,302
7.5	210	8 2/8	17	22/32	3,62	7,98	2,43	11,63	25,64	10.00R20	M	3.220	10,564
8	215	8 4/8	17	22/32	3,67	8,09	2,47	11,47	25,29	275/80R22.5	P	3.120	10,236
8	215	8 4/8	17	22/32	3,67	8,09	2,47	11,77	25,95	10.00R20	M	3.200	10,499
8,5	220	8 5/8	17	22/32	3,79	8,36	2,55	11,71	25,82	275/80R22.5	P	3.090	10,138
8,5	220	8 5/8	17	22/32	3,79	8,36	2,55	12,12	26,72	295/80R22.5	M	3.200	10,499
9	230	9	17	22/32	3,97	8,75	2,67	12,26	27,03	275/80R22.5	P	3.090	10,137
9	230	9	17	22/32	3,97	8,75	2,66	12,69	27,98	295/80R22.5 11R22.5	M	3.200	10,498
9	230	9	17	22/32	3,97	8,75	2,66	12,92	28,48	315/80R22.5	E	3.260	10,695
9.5	240	9 4/8	17	22/32	4,13	9,11	2,78	12,77	28,15	275/80R22.5	P	3.090	10,137
9.5	240	9 4/8	17	22/32	4,14	9,13	2,78	13,24	29,19	295/80R22.5	M	3.200	10,498
9.5	240	9 4/8	17	22/32	4,14	9,13	2,78	13,49	29,74	315/80R22.5	E	3.260	10,695
10	250	9 7/8	17	22/32	4,31	9,50	2,90	13,79	30,40	295/80R22.5	M	3.200	10,498
10	250	9 7/8	17	22/32	4,31	9,50	2,90	14,05	30,97	315/80R22.5	E	3.260	10,695
10.5	260	10 2/8	17	22/32	4,48	9,88	3,01	14,34	31,61	295/80R22.5	M	3.200	10,498
10.5	260	10 2/8	17	22/32	4,48	9,88	3,01	14,62	32,23	315/80R22.5	E	3.260	10,695



SC 865

Recommended Application:

Highway

Optional Application:

Regional

Drive Axle

Medium and Long Distances



CHARACTERISTICS

High performance tread with road direction, providing the best tractive response and driving.

TECHNICAL DATA

N#	Width		Tread Depth		Weight/m/Lbs./Foot			Weight/unit/Lbs.		Recommended Tire	Size	Length	
	mm	In	mm	In	kg/m	Lbs/m	Lbs/ft	kg	Lbs			mm	ft
9.5	240	9 4/8	20	25/32	5,13	11,31	3,45	16,02	35,32	275/80R22.5	P	3,120	10,236
9.5	240	9 4/8	20	25/32	5,13	11,31	3,45	16,28	35,89	295/80R22.5	M	3,170	10,4
9.5	240	9 4/8	20	25/32	5,13	11,31	3,45	16,84	37,13	315/80R22.5	E	3,280	10,761
10	250	9 7/8	20	25/32	5,35	11,79	3,60	17,13	37,77	295/80R22.5	P	3,140	10,302
10	250	9 7/8	20	25/32	5,35	11,79	3,60	17,13	37,77	295/80R22.5	M	3,200	10,498
10	250	9 7/8	20	25/32	5,35	11,79	3,60	17,71	39,04	315/80R22.5	E	3,310	10,859
10.5	260	10 2/8	20	25/32	5,56	12,26	3,74	17,73	39,09	295/80R22.5	M	3,190	10,465
10.5	260	10 2/8	20	25/32	5,56	12,26	3,74	18,40	40,57	315/80R22.5	E	3,310	10,859
11	270	10 5/8	20	25/32	5,78	12,74	3,89	18,39	40,54	295/80R22.5	M	3,180	10,432
11	270	10 5/8	20	25/32	5,78	12,74	3,89	19,15	42,22	315/80R22.5	E	3,310	10,859



SC 870

Recommended Application:
Mix Application

Optional Application:
Off the Road

Drive Axle
Medium and Large Distances



CHARACTERISTICS

Tread with strenght side blocks, allowing excellent power even on unpaved roads.

TECHNICAL DATA

N#	Width		Tread Depth		Weight/m/Lbs./Foot			Weight/unit/Lbs.		Recommended Tire	Size	Lenght	
	mm	In	mm	In	kg/m	Lbs/m	Lbs/ft	kg	Lbs			mm	ft
9	230	9	17	22/32	4,13	9,11	2,78	13,35	29,43	295/80R22.5 11R22.5	M	3,230	10,596
9	230	9	17	22/32	4,14	9,13	2,78	13,60	29,98	315/80R22.5	E	3,290	10,793
9.5	240	9 4/8	17	22/32	4,32	9,52	2,90	13,95	30,75	295/80R22.5	M	3,230	10,596
9.5	240	9 4/8	17	22/32	4,32	9,52	2,90	14,22	31,35	315/80R22.5	E	3,290	10,793
10	250	9 7/8	17	22/32	4,51	9,94	3,03	14,55	32,08	295/80R22.5	M	3,230	10,596
10	250	9 7/8	17	22/32	4,50	9,92	3,02	14,84	32,72	315/80R22.5	E	3,300	10,826



SC 875

Recommended Application:
Mix Application

Optional Application:
Off the Road

Drive Axle
Short and Medium Distances



CHARACTERISTICS

Tread with block design to provide excellent tractive response and driving in pick-up's e SUV's.

TECHNICAL DATA

N#	Width		Tread Depth		Weight/m/Lbs./Foot			Weight/unit/Lbs.		Recommended Tire	Size	Length	
	mm	In	mm	In	kg/m	Lbs/m	Lbs/ft	kg	Lbs			mm	ft
8.7	225	8 7/8	11	14/32	2,44	5,38	1,80	8,26	18,21	245/70R16 255/70R15	G	3,380	10,089
9.2	235	9 2/8	11	14/32	2,55	5,62	1,71	8,75	19,29	265/75R16 285/75R16	G	3,430	11,253



SC 881

Recommended Application:
Mix Application

Optional Application:
Off the Road

Drive Axle
Short Distances



CHARACTERISTICS

Tread rubber patten application using in rigorous conditions of use, strong blocks offering high traction capability.

TECHNICAL DATA

N#	Width		Tread Depth		Weight/m/Lbs./Foot			Weight/unit/Lbs.		Recommended Tire	Size	Lenght	
	mm	In	mm	In	kg/m	Lbs/m	Lbs/ft	kg	Lbs			mm	ft
8.5	220	8 5/8	20.5	26/32	4,84	10,67	3,25	15,25	33,62	295/80R22.5 11R22.5	M	3.150	10,335
8.5	220	8 5/8	20.5	26/32	4,83	10,65	3,25	15,60	34,39	315/80R22.5 11R24.5	ME	3.230	10,597
8.5	220	8 5/8	20.5	26/32	4,83	10,65	3,24	15,93	35,12	315/80R22.5	E	3.300	10,827
9	230	9	20.5	26/32	5,05	11,13	3,40	15,92	35,10	295/80R22.5 11R22.5	M	3.150	10,335
9	230	9	20.5	26/32	5,05	11,13	3,39	16,30	35,94	315/80R22.5 11R24.5	ME	3.230	10,597
9	230	9	20.5	26/32	5,05	11,13	3,40	16,68	36,77	315/80R22.5	E	3.300	10,827
9.5	240	9 4/8	20.5	26/32	5,28	11,64	3,55	16,62	36,64	295/80R22.5	M	3.150	10,335
9.5	240	9 4/8	20.5	26/32	5,27	11,62	3,54	17,02	37,52	315/80R22.5 11R24.5	ME	3.230	10,597
9.5	240	9 4/8	20.5	26/32	5,27	11,62	3,54	17,44	38,45	315/80R22.5	E	3.310	10,860
10	250	9 7/8	20.5	26/32	5,49	12,10	3,69	17,30	38,14	295/80R22.5	M	3.150	10,335
10	250	9 7/8	20.5	26/32	5,49	12,10	3,69	17,75	39,13	315/80R22.5 11R24.5	ME	3.230	10,597
10	250	9 7/8	20.5	26/32	5,49	12,10	3,69	18,21	40,15	315/80R22.5	E	3.320	10,892



SC 884

Recommended Application:
Mix Application

Optional Application:
Off the Road

Drive Axle
Short Distances



CHARACTERISTICS

Tread rubber patten application using in rigorous conditions of use, strong blocks offering high traction capability, suitable for off-road use.

TECHNICAL DATA

N#	Width		Tread Depth		Weight/m/Lbs./Foot			Weight/unit/Lbs.		Recommended Tire	Size	Lenght	
	mm	In	mm	In	kg/m	Lbs/m	Lbs/ft	kg	Lbs			mm	ft
9	230	9	22	28/32	5,26	11,60	3,53	16,86	37,17	295/80R22.5 11R22.5	M	3,210	10,531
9	230	9	22	28/32	5,26	11,60	3,53	17,24	38,01	315/80R22.5	E	3,280	10,761
9.5	240	9 4/8	22	28/32	5,52	12,17	3,71	17,76	39,15	295/80R22.5	M	3,220	10,564
9.5	240	9 4/8	22	28/32	5,52	12,17	3,71	18,20	40,12	315/80R22.5	E	3,300	10,827
10	250	9 7/8	22	28/32	5,73	12,63	3,85	18,32	40,39	295/80R22.5	M	3,200	10,499
10	250	9 7/8	22	28/32	5,73	12,63	3,85	18,78	41,40	315/80R22.5	E	3,280	10,761



SC 885

Recommended Application:

Highway

Optional Application:

Regional

Drive Axle

Short Distances



CHARACTERISTICS

Tread especially designed for forklift vehicles. Offers excellent driving and performance.

TECHNICAL DATA

N#	Width		Tread Depth		Weight/m/Lbs./Foot			Weight/unit/Lbs.		Recommended Tire	Size	Lenght	
	mm	In	mm	In	kg/m	Lbs/m	Lbs/ft	kg	Lbs			mm	ft
2.5	120	4 6/8	18	23/32	2,24	4,94	1,50	7,50	16,53	5.00 X 8 6.00 X 9	G	3.350	10,99
3	140	5 4/8	18	23/32	2,61	5,75	1,76	9,02	19,89	6.00 X 9 6.50 X 10	G	3.450	11,318
3.5	150	5 7/8	18	23/32	2,80	6,17	1,88	9,48	20,90	6.50 X 10 7.00 X 12	G	3.390	11,121
4.5	165	6 4/8	20	25/32	3,34	7,36	2,24	11,38	25,09	6.50 X 10 7.00 X 12	G	3.410	11,187
6	185	7 2/8	20	25/32	3,75	8,27	2,52	12,95	28,55	7.00 X 12 7.50 X 15 8.25 X 15	G	3.460	11,351
7	200	7 7/8	20	25/32	4,05	8,93	2,72	14,02	30,91	28.9 X 15 25.0 x 15	G	3.460	11,351



SC 908

Recommended Application:

Highway

Optional Application:

Regional

Trailer Axle

Short and Medium Distances



CHARACTERISTICS

Tread for diagonal tires excellent performance, developed to avoid cracks in the grooves.

TECHNICAL DATA

N#	Width		Tread Depth		Weight/m/Lbs./Foot			Weight/unit/Lbs.		Recommended Tire	Size	Lenght	
	mm	In	mm	In	kg/m	Lbs/m	Lbs/ft	kg	Lbs			mm	ft
2.7	135	5 3/8	10	13/32	1,70	3,75	1,14	5,86	12,92	7.00 X 16 7.50 X 16	G	3.450	11,318
3.5	150	5 7/8	10	13/32	1,86	4,10	1,25	4,42	9,74	7.00 X 16	MICRO	2.380	7,808
4	160	6 2/8	10	13/32	1,98	4,37	1,36	4,90	10,80	7.00 X 16 7.50 X 16	MICRO	2.420	7,939
5.5	180	7 1/8	12	15/32	2,58	5,69	1,73	7,84	17,28	9.00X20	P	3.050	10,007
6.5	190	7 4/8	12	15/32	2,76	6,08	1,85	8,32	18,34	9.00X20	P	3.020	9,908
7	200	7 7/8	12	15/32	2,90	6,39	1,95	8,81	19,42	9.00X20	P	3.040	9,973
7	200	7 7/8	12	15/32	2,90	6,39	1,95	9,01	19,86	10.00X20	M	3.110	10,203
7.5	210	8 2/8	12	15/32	3,05	6,72	2,05	9,50	20,94	10.00X20	M	3.110	10,203
8	215	8 4/8	12	15/32	3,13	6,90	2,10	9,99	22,02	10.00X22	M	3.200	11,499
8	215	8 4/8	12	15/32	3,12	6,88	2,09	10,66	23,50	11.00X22	G	3.420	11,22

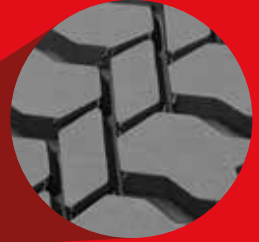


SC 960

Recommended Application:
Mix Application

Optional Application:
Off the Road

Drive Axle
Short and Medium Distances



CHARACTERISTICS

Tread for bias tires with high traction power and resistant to cuts, chip and chunk.

TECHNICAL DATA

N#	Width		Tread Depth		Weight/m/Lbs./Foot			Weight/unit/Lbs.		Recommended Tire	Size	Length	
	mm	In	mm	In	kg/m	Lbs/m	Lbs/ft	kg	Lbs			mm	ft
3.5	150	5 7/8	12	15/32	2,10	4,63	1,41	5,10	11,24	7.00 X 16	MICRO	2.430	7,972
4	160	6 2/8	12	15/32	2,26	4,98	1,52	5,44	11,99	7.00 X 16 7.50 X 16	MICRO	2.410	7,906
5.5	180	7 1/8	15	19/32	3,02	6,66	2,03	7,33	16,16	215/75R17.5	MICRO	2.430	7,972
6.5	190	7 4/8	15	19/32	3,19	7,03	2,14	7,90	17,42	215/75R17.5	MICRO	2.480	8,136
6.5	190	7 4/8	15	19/32	3,19	7,03	2,14	9,79	21,58	9.00X20	P	3.070	10,072
6.5	190	7 4/8	15	19/32	3,19	7,03	2,14	10,17	22,42	10.00X20	M	3.190	10,465
7	200	7 7/8	15	19/32	3,39	7,47	2,28	10,70	23,59	10.00X20	M	3.160	10,367
7.5	210	8 2/8	15	19/32	3,54	7,80	2,37	11,20	24,69	10.00X20	M	3.170	10,4



CUSHION GUM

The Silvercap Cushion Gum is recommended for use in tire repairs and overhauls, using press and/or autoclave vulcanization processes.



CHARACTERISTICS

- Autoclavable for radial and bias tyres;
- Coating for hot repairs;
- High adhesion power "TACK";
- Thickness 0.9 mm "Performs More".

TECHNICAL DATA

Width		Thickness		Package	
mm	In	mm	In	Kg	Lbs
165	6 4/8	0,9	0,035	10	22,0462
175	6 7/8	0,9	0,035	10	22,0462
185	7 2/8	0,9	0,035	10	22,0462
195	7 5/8	0,9	0,035	10	22,0462
205	8 1/8	0,9	0,035	10	22,0462
215	8 4/8	0,9	0,035	10	22,0462
225	8 7/8	0,9	0,035	10	22,0462
235	9 2/8	0,9	0,035	10	22,0462
245	9 5/8	0,9	0,035	10	22,0462
255	10 /8	0,9	0,035	10	22,0462
265	10 3/8	0,9	0,035	10	22,0462
275	10 7/8	0,9	0,035	10	22,0462
345	13 5/8	0,9	0,035	10	22,0462

SUPPLIES AND ACESSORIES- SILVERCAP



EXTRUDER ROPE

Silvercap extruder rope is indicated to use in precured tread retread process, specially designed for vulcanization in presses and chambers (autoclaves).



CHARACTERISTICS

- Use on radial and bias tires;
- Easy application with the use of a mini-extruder;
- Thickness 6.0mm.

TECHNICAL DATA

mm	Thickness		Package	
		In	Kg	Lbs
6		4/16	17	37,4786
9		6/16	17	37,4786



ANTI-CRACKING STRIP GUM

Anti cracking strip rubber is recommended to use in the tire shoulder areas, providing reinforcement and good termination in retread processes using chambers (autoclave).



CHARACTERISTICS

- Easy drive;
- Autoclavable for radial and bias tires;
- High adhesion power "TACK".

TECHNICAL DATA

Width		Thickness		Package	
mm	In	mm	In	Kg	Lbs
30	1 3/16	1	1/32	20	44,0925



MULTIPURPOSE CEMENT

Silvercap quick-drying multipurpose cement is indicated for use in tire repairs and tire retread processes, using presses for hot cure and/or using chambers (autoclaves).



CHARACTERISTICS

- High adhesion power;
- Two versions with different viscosities for application with a brush or pressure pump;
- Fast dry.

TECHNICAL DATA

Package	Content	
	Liters	Gal
Bucket	20	5,28344
Drum	200	52,8344



SOLVENT

Silvercap Solvent is indicated for the dilution of the fast drying cement.



CHARACTERISTICS

- Oil free. It allows to adjust the viscosity of the cement according to the need.

TECHNICAL DATA

Package	Content	
	Liters	Gal
Bucket	20	5,28344

TIRE PAINT

Indicated for renovation the appearance of the retread tires.



CHARACTERISTICS

- Good fixation;
- Great coverage and performance.

TECHNICAL DATA

Package	Content	
	Liters	Gal
Drum	20	5,28344
Drum	50	13,2086

Distributed by:



2024-03

CONTACT

+55 54 32424492

www.silvercap.net | contato@silvercap.net

Rua Flores da Cunha, 1082 Sala 101, Nova Prata | CEP 95320000
Rio Grande do Sul | Brasil